

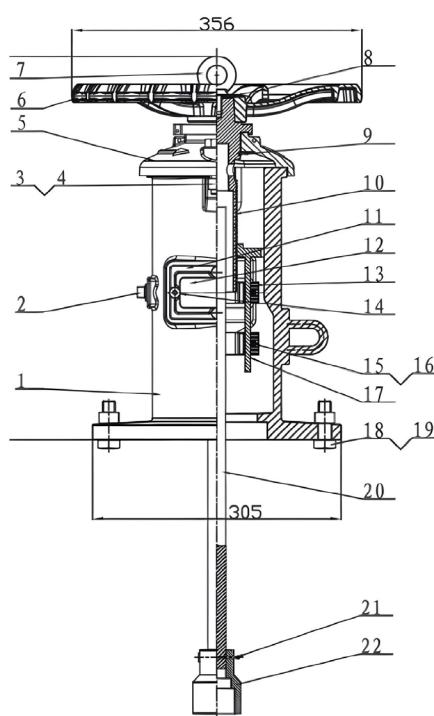
## 1.13// WALL INDICATOR POST UL/FM APPROVED (SKYEG-WP)



### FEATURES

**Statement:** Wall indicator post provides a means to operate a valve installed behind a wall and able to indicate the open or shut position of the valve.

**Coating:** Fusion Bonded Epoxy Coating in accordance with ANSI/AWWA C550



### MATERIAL SPECIFICATIONS

No.	Part Name	Material	No.	Part Name	Material
1	Body	Cast Iron ASTM A126 Class B	12	Window Glass	Plexiglass
2	Plug	Malleable Iron	13	Target	Cast Aluminum
3	Square Nut	Carbon Steel Zinc Plated	14	Hex Bolt	Carbon Steel Zinc Plated
4	Hex Bolt	Carbon Steel Zinc Plated	15	Hex Bolt	Carbon Steel Zinc Plated
5	Cover	Cast Iron ASTM A126 Class B	16	Hex Nut	Carbon Steel Zinc Plated
6	Hand Wheel	ASTM A536, 65-45-12	17	Target Carrier Nut	AISI 304
7	Eye Bolt	Carbon Steel Zinc Plated	18	Hex Nut	Carbon Steel Zinc Plated
8	Gasket	Carbon Steel Zinc Plated	19	Hex Bolt	Carbon Steel Zinc Plated
9	Snap Ring	AISI 1066	20	Stem 1" Square	Carbon Steel AISI 1045
10	Operating NUT	AISI 304	21	Cotter Pin	AISI 304
11	Gasket	EPDM	22	Socket	ASTM A536, 65-45-12

Note: For special material request other than standard specification, please indicate clearly on the inquiry or order list.