

1.17// SUPERVISORY SWITCH FOR OS&Y GATE VALVE

FM APPROVED

(SKEG-WFI)

FEATURES

Service Environment: Indoor or Outdoor Use, all parts

have corrosion resistant finishes

Temperature Range: 0°C- 80°C

Cover Tamper: Tamper Resistant Screws Optional Cover
Tamper Switch Available.

Electrical Ratings: 15 Amps at 125/250VAC

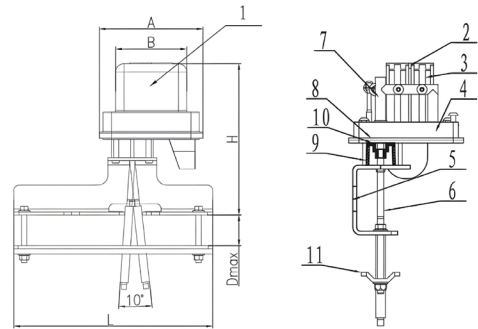
Appliance Standards: NFPA-13, NFPA-13D, NFPA-13R, NFPA-72

Statement: The Model MXHQ Supervisory Switch is used to monitor the open or close status of an OS&Y (outside screw and yoke) type gate valve. There are two sizes, the model MXHQ D50 serves the OS&Y Gate valves ranging in size from 2"-16"(50mm - 400mm), the other model MXHQ D450 is fit for the OS&Y Gate valves ranging in size from 18"-24"(450mm - 600mm).



DIMENSIONS

DN		Dimensions (mm)				
Inch	mm	A	B	H	L	Dmax
2"-16"	50-400	99	68	148	200	105
18"-24"	450-600	99	68	148	360	135



MATERIAL SPECIFICATIONS

No.	Part Name	Material	Options	No.	Part Name	Material
1	Outer Shell	ADC12		7	Axis	Nylon
2	Brace	CS Q235	AISI 304, AISI 316	8	Sealing Gasket	CR Foam Cotton
3	Micro Switch			9	Pressing Sleeve	PTFE
4	Base	ADC12		10	Rubber Ring	EPDM
5	Connection Plate	CS Q235	AISI 304, AISI 316	11	Clamp Plate	Carbon Steel Q235
6	Driving Lever	AISI 304	AISI 316			

Note: For special material request other than standard specification, please indicate clearly on the inquiry or order list.



TYPICAL ELECTRICAL CONNECTIONS

